



Quality candles  
since 1899

*Dufti*<sup>®</sup>  
by GIES

# World of Lights and *Fragrance* 2022



# For GIES Kerzen GmbH quality simply means ambition and obligation.



A candle is not just a candle. This is why we at GIES Kerzen attach great importance to the quality of our products. Our trademark stands for highest quality and safety, in which our customers can trust.

The high standards currently placed on candles are our quality criteria. We solely process selected basic materials like fully refined paraffin, selected stearin, phthalate free perfumes as well as purely cotton wicks. The colours used also comply with part three of the DIN-standard EN 71.

The excellent quality of our products, and their compatibility with human health and the environment is confirmed by RAL quality label for candles.

In order to maintain our position, we are committed to having the quality of our candles regularly inspected by an independent expert officially appointed by DEKRA Umwelt GmbH. In addition, in order to ensure consistently high quality, our candles and the raw materials required for their production are checked directly in production quality management, with each inspection being documented appropriately.

Reliable quality, but also continuous product development and improvement are part of our principles, which we are committed to since more than a hundred years.

## THE RAL QUALITY LABEL FOR CANDLES IS PROOF OF HIGHEST QUALITY

- **Quality ensured raw materials** – To ensure quality right from the start
- **Burn-off tested candles** – For clean burning without dripping
- **Inspection of all ingredients** – For the sake of consumer's health and the environment



### **RSPO – Roundtable of Sustainable Palmoil**

Gies Kerzen GmbH has been a member of RSPO since 2012. This organization is committed to the sustainable cultivation of palm oil and supports small farmers in the countries of origin of palm oil.

According to the RSPO classification, Gies Kerzen GmbH offers products from different sustainability classes, usually mass balance (MB) or segregated (SG). The certificate number of the corresponding production facility is usually indicated on the packaging. Gies Kerzen GmbH is listed as an RSPO member together with the production site Promol (Portugal) under the parent company ALG Holding GmbH with the membership number 4-1166-19-000-00. The ACOP annual progress report is also published under this.

---



### **BSCI Business Social Compliance Initiative**

Since 2010, GIES Kerzen GmbH is a member of the BSCI and advocates the improvement of social standards in the supplier countries as an integral part of the social responsibility of companies in the global economy. For our products, this means:

- No use of child labour
  - Respecting the prescribed minimum wages
  - Compliance with hygiene standards
-

**STANDARD**

PILLAR CANDLES	5 – 13
RUSTIC CANDLES	14 – 15
GROOVED CANDLES <b>NEW</b>	16
HOUSEHOLD CANDLES	17
DINNER CANDLES	18
TAPER CANDLES	19
TEALIGHTS AND PREMIUM LIGHTS	20 – 24
MASTER-LIGHTS	25
MAXI LIGHTS	26 – 27
THREE-WICK CANDLE <b>NEW</b> / FILLED GLASSES /	
OUTDOOR PARTY CANDLES / LANTERN	28
BIRTHDAY CANDLES / DRIP CANDLES / CHRISTMAS TREE CANDLES	29

**SCENT**

SCENTED PILLAR CANDLES	31
SCENTED CANDLES IN GLASSES <b>NEW</b>	32 – 35
SCENTED LIGHTS	36 – 37
SCENTED MAXI LIGHTS	37
SCENTED VOTIVE CANDLES	38
ROOM FRAGRANCES	38
SCENTED OILS	39
SCENTED MELTIES	39
ANTI TOBACCO	40
WELLNESS	41

<b>ACCESSORIES</b> <b>NEW</b>	42 – 44
-------------------------------	---------

**GENERAL**

QUALITY	2 – 3
COLOUR AND SIZE GUIDE „PLAIN CANDLES“	45
SALES AND DELIVERY CONDITIONS	46
RAL SEAL OF APPROVAL	47





**THE SIZES AT A GLANCE**

---





**1 PILLAR CANDLE · 80 x 48 mm**

dipped quality, individually shrink-wrapped  
 Dimensions 80 x 48 mm  
 Ordering Unit 1 carton = 10 pieces  
 Pallet Index 306 cartons = 3060 pieces



COLOUR	ITEM NO.	BARCODE CARTON	BARCODE PIECE
○ white	205-223010-10	4002653 769309	4002653 069393
● champagne	205-223010-14	4002653 769316	4002653 069409
● antique pink	205-223010-32	4002653 781462	4002653 081357
● red	205-223010-33	4002653 769347	4002653 069430
● sage	205-223010-63	4002653 781479	4002653 081364
● taupe	205-223010-81	4002653 752899	4002653 055044



**2 PILLAR CANDLE · 100 x 58 mm**

dipped quality, individually shrink-wrapped  
 Dimensions 100 x 58 mm  
 Ordering Unit 1 carton = 6 pieces  
 Pallet Index 266 cartons = 1596 pieces



COLOUR	ITEM NO.	BARCODE CARTON	BARCODE PIECE
○ white	205-235010-10	4002653 749035	4002653 050919
● champagne	205-235010-14	4002653 749042	4002653 050926
● red	205-235010-33	4002653 749073	4002653 050957





**3 PILLAR CANDLE · 120 x 78 mm**

dipped quality, individually shrink-wrapped  
 Dimensions 120 x 78 mm  
 Ordering Unit 1 carton = 4 pieces  
 Pallet Index 168 cartons = 672 pieces



COLOUR	ITEM NO.	BARCODE CARTON	BARCODE PIECE
○ white	205-256003-10	4002653 744122	4002653 000938
● champagne	205-256003-14	4002653 732587	4002653 003809
● antique pink	205-256003-32	4002653 745150	4002653 000907
● red	205-256003-33	4002653 732563	4002653 000914
● sage	205-256003-63	4002653 752905	4002653 055051
● taupe	205-256003-81	4002653 752912	4002653 055068



**4 PILLAR CANDLE · 130 x 58 mm**

dipped quality, individually shrink-wrapped  
 Dimensions 130 x 58 mm  
 Ordering Unit 1 carton = 6 pieces  
 Pallet Index 228 cartons = 1368 pieces



COLOUR	ITEM NO.	BARCODE CARTON	BARCODE PIECE
○ white	205-237005-10	4002653 744146	4002653 046172
● champagne	205-237005-14	4002653 732624	4002653 003724
● antique pink	205-237005-32	4002653 744825	4002653 151012
● red	205-237005-33	4002653 732600	4002653 151029
● sage	205-237005-63	4002653 744863	4002653 043638
● taupe	205-237005-81	4002653 752929	4002653 055075



**5 PILLAR CANDLE · 150 x 68 mm**

dipped quality, individually shrink-wrapped  
 Dimensions 150 x 68 mm  
 Ordering Unit 1 carton = 6 pieces  
 Pallet Index 145 cartons = 870 pieces



COLOUR	ITEM NO.	BARCODE CARTON	BARCODE PIECE
○ white	205-247026-10	4002653 769408	4002653 069584
● champagne	205-247026-14	4002653 769415	4002653 069591



**6 PILLAR CANDLE · 160 x 58 mm**

dipped quality, individually shrink-wrapped  
 Dimensions 160 x 58 mm  
 Ordering Unit 1 carton = 6 pieces  
 Pallet Index 190 cartons = 1140 pieces



COLOUR	ITEM NO.	BARCODE CARTON	BARCODE PIECE
○ white	205-238035-10	4002653 749158	4002653 051039
● champagne	205-238035-14	4002653 749165	4002653 051046



**7 PILLAR CANDLE · 180 x 78 mm**

dipped quality, individually shrink-wrapped  
 Dimensions 180 x 78 mm  
 Ordering Unit 1 carton = 6 pieces  
 Pallet Index 84 cartons = 504 pieces



COLOUR	ITEM NO.	BARCODE CARTON	BARCODE PIECE
○ white	205-258002-10	4002653 769644	4002653 069812
● champagne	205-258002-14	4002653 769651	4002653 069829



**8 PILLAR CANDLE · 200 x 68 mm**

dipped quality, individually shrink-wrapped  
 Dimensions 200 x 68 mm  
 Ordering Unit 1 carton = 4 pieces  
 Pallet Index 160 cartons



COLOUR	ITEM NO.	BARCODE CARTON	BARCODE PIECE
○ white	205-248023-10	4002653 769507	4002653 069683
● champagne	205-248023-14	4002653 769514	4002653 069690





**9 PILLAR CANDLE · 250 x 78 mm**

dipped quality, individually shrink-wrapped

Dimensions 250 x 78 mm  
Ordering Unit 1 carton = 6 pieces  
Pallet Index 63 cartons = 378 pieces



COLOUR	ITEM NO.	BARCODE CARTON	BARCODE PIECE
● champagne	205-259002-14	4002653 730590	4002653 030416



**10 PILLAR CANDLE · 300 x 88 mm**

dipped quality, individually shrink-wrapped

Dimensions 300 x 88 mm  
Ordering Unit 1 carton = 3 pieces  
Pallet Index 96 cartons = 288 pieces



COLOUR	ITEM NO.	BARCODE CARTON	BARCODE PIECE
● champagne	205-269002-14	4002653 744580	4002653 046516



**ANTI-TOBACCO PILLAR CANDLE · 110 x 58 mm**

in fold box

Dimensions 110 x 58 mm  
Ordering Unit 1 carton = 12 pieces  
Pallet Index 108 cartons = 1296 pieces



COLOUR	ITEM NO.	BARCODE CARTON	BARCODE PIECE
● green	205-235001-66	4002653 703259	4002653 192626



**PROFI** *Line*

**PILLAR CANDLE** · 100 x 48 mm · tray of 6

dipped quality, unwrapped

Dimensions 100 x 48 mm  
Ordering Unit 1 carton = 4 trays  
Pallet Index 96 cartons = 384 trays



COLOUR	ITEM NO.	BARCODE CARTON	BARCODE TRAY
● champagne	205-225020-14	4002653 779834	4002653 079941



**PROFI** *Line*

**PILLAR CANDLE** · 130 x 58 mm · tray of 6

dipped quality, unwrapped

Dimensions 130 x 58 mm  
Ordering Unit 1 carton = 6 trays  
Pallet Index 42 cartons = 252 trays



COLOUR	ITEM NO.	BARCODE CARTON	BARCODE TRAY
○ white	205-237132-10	4002653 779858	4002653 079972
● champagne	205-237132-14	4002653 779865	4002653 079989



**PROFI** *Line*

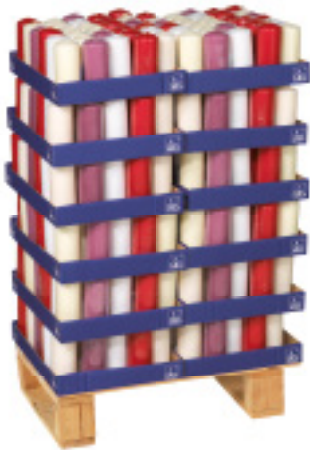
**PILLAR CANDLE** · 200 x 68 mm · tray of 4

dipped quality, unwrapped

Dimensions 200 x 68 mm  
Ordering Unit 1 carton = 3 trays  
Pallet Index 48 cartons = 144 trays



COLOUR	ITEM NO.	BARCODE CARTON	BARCODE TRAY
● champagne	205-248038-14	4002653 780274	4002653 080459



**1/4 SERVICE PALLET\***  
**PILLAR CANDLES** · 130 x 58 mm

shrink-wrapped, 12 trays à 30 pieces  
Dimensions 130 x 58 mm  
Ordering Unit 1/4 SP = 360 pieces  
Pallet Index 4 service paletts = 1440 pieces



COLOUR	ITEM NO.	BARCODE SP
sortiert	205-237010-08	4002653 807445

COLOUR	SORTING	BARCODE PIECE
○ white	each 48 x white	4002653 046172
● champagne	each 120 x champagne	4002653 003724
● red	each 132 x red	4002653 151029
● antique pink	each 60 x antique pink	4002653 151012

Minimum order quantity: 53 service paletts



**1/4 SERVICE PALLET\***  
**PILLAR CANDLES** · 130 x 58 mm

shrink-wrapped, 8 trays à 30 pieces  
Dimensions 130 x 58 mm  
Ordering Unit 1/4 SP = 240 pieces  
Pallet Index 4 service paletts = 960 pieces



COLOUR	ITEM NO.	BARCODE SP
sortiert	205-237063-01	4002653 807452

COLOUR	SORTING	BARCODE PIECE
○ white	each 32 x white	4002653 046172
● champagne	each 80 x champagne	4002653 003724
● red	each 80 x red	4002653 151029
● antique pink	each 48 x antique pink	4002653 151012

Minimum order quantity: 79 service paletts



**1/4 SERVICE PALLET\***  
**PILLAR CANDLES** · 160 x 58 mm

shrink-wrapped, 10 trays à 30 pieces  
Dimensions 160 x 58 mm  
Ordering Unit 1/4 SP = 300 pieces  
Pallet Index 4 service paletts = 1200 pieces



COLOUR	ITEM NO.	BARCODE SP
sortiert	205-238036-05	4002653 807469

COLOUR	SORTING	BARCODE PIECE
○ white	each 50 x white	4002653 051039
● champagne	each 100 x champagne	4002653 051046
● red	each 100 x red	4002653 051077
● antique pink	each 50 x antique pink	4002653 055815

Minimum order quantity: 79 service paletts



**1/4 SERVICE PALLET\***

**PILLAR CANDLES · 200 x 68 mm**

shrink-wrapped, 8 trays à 20 pieces  
 Dimensions 200 x 68 mm  
 Ordering Unit 1/4 SP = 160 pieces  
 Pallet Index 4 service paletts = 640 pieces



COLOUR	ITEM NO.	BARCODE SP
sortiert	205-248024-02	4002653 807711

COLOUR	SORTING	BARCODE PIECE
○ white	each 24 x white	4002653 069683
● champagne	each 56 x champagne	4002653 069690
● red	each 56 x red	4002653 069720
● antique pink	each 24 x antique pink	4002653 055822

Minimum order quantity: 105 service paletts



**1/4 SERVICE PALLET\***

**PILLAR CANDLES · 120 x 78 mm**

shrink-wrapped, 14 trays à 15 pieces  
 Dimensions 120 x 78 mm  
 Ordering Unit 1/4 SP = 210 pieces  
 Pallet Index 4 service paletts = 840 pieces

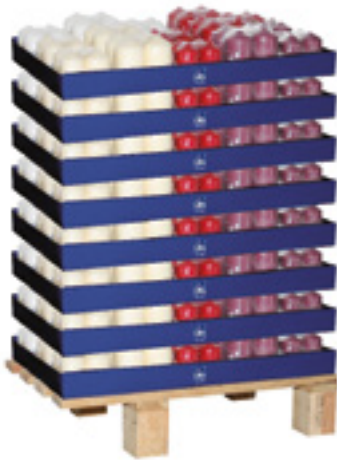


COLOUR	ITEM NO.	BARCODE SP
sortiert	205-256004-05	4002653 807483

COLOUR	SORTING	BARCODE PIECE
○ white	each 28 x white	4002653 000938
● champagne	each 70 x champagne	4002653 003809
● red	each 70 x red	4002653 000914
● antique pink	each 42 x antique pink	4002653 000907

Minimum order quantity: 90 service paletts





**1/4 SERVICE PALLET\***

**PILLAR CANDLES** · packs of 4  
80 x 48 mm / 100 x 58 mm · Bell head



Dimensions 80 x 48 mm / 100 x 58 mm  
Ordering Unit 1/4 SP = 120 packs  
(72 packs 80 x 48 mm,  
48 packs 100 x 58 mm)  
Pallet Index 4 service paletts = 480 packs  
(288 packs 80 x 48 mm,  
192 packs 100 x 58 mm)

COLOUR	ITEM NO.	BARCODE SP
sortiert	205-260041-02	4002653 807490

COLOUR	SORTING 80 x 48	BARCODE PACK
○ white	each 16 x white	4002653 083221
● champagne	each 16 x champagne	4002653 083238
● red	each 24 x red	4002653 083245
● antique pink	each 16 x antique pink	4002653 055839

COLOUR	SORTING 100 x 58	BARCODE PACK
○ white	each 8 x white	4002653 083306
● champagne	each 16 x champagne	4002653 083313
● red	each 16 x red	4002653 083320
● antique pink	each 8 x antique pink	4002653 055846

Minimum order quantity: 79 service paletts







**PREMIUM RUSTIC CANDLE · 80 x 68 mm**

poured in full color, 100% paraffin  
 Dimensions 80 x 68 mm  
 Ordering Unit 1 carton = 6 pieces  
 Pallet Index 234 cartons = 1404 pieces

COLOUR	ITEM NO.	BARCODE CARTON	BARCODE PIECE
○ white	212-242019-10	4002653 752042	4002653 053637
● champagne	212-242019-14	4002653 789130	4002653 091653
● pink	212-242019-30	4002653 790013	4002653 092711
● antique pink	212-242019-32	4002653 789185	4002653 091707
● ruby	212-242019-35	4002653 789154	4002653 091677
● light green	212-242019-61	4002653 790037	4002653 092728
● sage	212-242019-62	4002653 789178	4002653 091691
● taupe	212-242019-80	4002653 789147	4002653 091660
● anthracite	212-242019-82	4002653 789161	4002653 091684



## PREMIUM RUSTIC CANDLE · 130 x 68 mm

poured in full color, 100% paraffin

Dimensions 130 x 68 mm

Ordering Unit 1 carton = 6 pieces

Pallet Index 156 cartons = 936 pieces

COLOUR	ITEM NO.	BARCODE CARTON	BARCODE PIECE
○ white	212-247066-10	4002653 789239	4002653 091813
● champagne	212-247066-14	4002653 789079	4002653 091592
● orange	212-247066-25*	4002653 751854	4002653 053439
● pink	212-247066-30	4002653 789260	4002653 091844
● antique pink	212-247066-32	4002653 789123	4002653 091646
● ruby	212-247066-35	4002653 789093	4002653 091615
● light green	212-247066-61	4002653 752790	4002653 055006
● sage	212-247066-62	4002653 789116	4002653 091639
● taupe	212-247066-80	4002653 789086	4002653 091608
● anthracite	212-247066-82	4002653 789109	4002653 091622



## PREMIUM RUSTIC CANDLE · 190 x 68 mm

poured in full color, 100% paraffin

Dimensions 190 x 68 mm

Ordering Unit 1 carton = 6 pieces

Pallet Index 104 cartons = 624 pieces

COLOUR	ITEM NO.	BARCODE CARTON	BARCODE PIECE
○ white	212-248044-10	4002653 789192	4002653 091776
● champagne	212-248044-14	4002653 789017	4002653 091530
● antique pink	212-248044-32	4002653 789062	4002653 091585
● ruby	212-248044-35	4002653 789031	4002653 091554
● sage	212-248044-62	4002653 789055	4002653 091578
● taupe	212-248044-80	4002653 789024	4002653 091547
● anthracite	212-248044-82	4002653 789048	4002653 091561

**NEW** GROOVED CANDLES



**NEW** GROOVED TAPER CANDLE · pack of 2

Dimensions 230 x 22 mm  
Ordering Unit 1 carton = 8 packs  
Pallet Index 320 cartons = 2560 packs



COLOUR	ITEM NO.	BARCODE CARTON	BARCODE PACK
○ white	205-171001-10	4002653 754855	4002653 057215
● antique pink	205-171001-32	4002653 754862	4002653 057222
● anthracite	205-171001-82	4002653 754565	4002653 056928



**NEW** GROOVED PILLAR CANDLE · 130 x 58 mm

Dimensions 130 x 58 mm  
Ordering Unit 1 carton = 6 pieces  
Pallet Index 228 cartons = 1368 pieces



COLOUR	ITEM NO.	BARCODE CARTON	BARCODE PIECE
○ white	205-769001-10	4002653 754909	4002653 057260
● antique pink	205-769001-32	4002653 754916	4002653 057277
● anthracite	205-769001-82	4002653 754923	4002653 057284





**PROFI**Line

**HOUSEHOLD CANDLES** · carton of 104

Dimensions 180 x 21,5 mm  
Ordering Unit 1 carton = 104 pieces  
Pallet Index 64 cartons = 6656 pieces



COLOUR	ITEM NO.	BARCODE CARTON
○ white	205-149001-10	4002653 748397
● champagne	205-149001-14	4002653 748625
● red	205-149001-33	4002653 748403



**PROFI**Line

**HOUSEHOLD CANDLES WITH PIN HOLE** · carton of 120

Dimensions 200 x 24,5 mm  
Ordering Unit 1 carton = 120 pieces  
Pallet Index 48 cartons = 5760 pieces



COLOUR	ITEM NO.	BARCODE CARTON
○ white	205-169000-10	4002653 010692



**PROFI**Line

**HOUSEHOLD CANDLES WITH PIN HOLE** · carton of 160

Dimensions 194 x 22,2 mm  
Ordering Unit 1 carton = 160 pieces  
Pallet Index 44 cartons = 7040 pieces



COLOUR	ITEM NO.	BARCODE CARTON
○ white	205-159000-10	4002653 010593





**DINNER CANDLES** · pack of 10

dipped quality

Dimensions 180 x 21,5 mm

Ordering Unit 1 carton = 12 packs

Pallet Index 56 cartons = 672 pieces



COLOUR	ITEM NO.	BARCODE CARTON	BARCODE PACK
○ white	205-143000-10	5748484 050368	5701302 050360
● champagne	205-143000-14	5748484 218379	5701302 218371
● red	205-143000-33	5748484 050399	5701302 050391





## TAPER CANDLES · pack of 10

dipped quality  
 Dimensions 245 x 22 mm  
 Ordering Unit 1 carton = 12 packs  
 Pallet Index 54 cartons = 648 packs



COLOUR	ITEM NO.	BARCODE CARTON	BARCODE PACK
○ white	205-335000-10	4002653 700159	4002653 000051
● champagne	205-335000-14	4002653 714897	4002653 007678
● antique pink	205-335000-32	4002653 752868	4002653 055013
● red	205-335000-33	4002653 700142	4002653 000044
● sage	205-335000-63	4002653 752875	4002653 055020
● grey	205-335000-81	4002653 752882	4002653 055037



## PROFI Line

## TAPER CANDLES · pack of 50

dipped quality  
 Dimensions 245 x 22 mm  
 Ordering Unit 1 carton = 2 packs  
 Pallet Index 64 cartons = 128 packs



COLOUR	ITEM NO.	BARCODE CARTON	BARCODE PACK
○ white	205-339000-10	4002653 719236	4002653 021070
● champagne	205-339000-14	4002653 719243	4002653 021087
● yellow	205-339000-17	4002653 745907	4002653 046905
● antique pink	205-339000-32	4002653 719205	4002653 021049
● red	205-339000-33	4002653 719212	4002653 021056
● burgundy	205-339000-36	4002653 719380	4002653 021223
● dark blue	205-339000-56	4002653 719311	4002653 021155
● sage	205-339000-63	4002653 752714	4002653 054924
● dark green	205-339000-66	4002653 719359	4002653 021193
● grey	205-339000-81	4002653 752707	4002653 054719





**TEA LIGHTS** · bag of 30

in metal cups  
 Dimensions Ø 38 mm  
 Ordering Unit 1 carton = 20 bags  
 Pallet Index 32 cartons = 640 bags



COLOUR	ITEM NO.	BARCODE CARTON	BARCODE BAG
○ white	205-414000-10	4002653 701651	4002653 052357



**TEA LIGHTS** · bag of 50



in metal cups  
Dimensions Ø 38 mm  
Ordering Unit 1 carton = 16 bags  
Pallet Index 24 cartons = 384 bags

COLOUR	ITEM NO.	BARCODE CARTON	BARCODE BAG
○ white	205-416000-10	4002653 722328	4002653 052432



**TEA LIGHTS** · bag of 100



in metal cups  
Dimensions Ø 38 mm  
Ordering Unit 1 carton = 8 bags  
Pallet Index 24 cartons = 192 bags

COLOUR	ITEM NO.	BARCODE CARTON	BARCODE BAG
○ white	205-417007-10	4002653 705895	4002653 052449



**TEA LIGHTS\*** · flatpack of 100

in metal cups  
Dimensions Ø 38 mm  
Ordering Unit 1 carton = 8 flatpacks  
Pallet Index 36 cartons = 288 flatpacks

COLOUR	ITEM NO.	BARCODE CARTON	BARCODE FLATPACK
○ white	205-417067-10	4002653 750598	4002653 052258



*with green wick*

**PREMIUM LIGHTS** · bag of 40

in metal cups, burning time ± 6h  
 Dimensions Ø 38 mm  
 Ordering Unit 1 carton = 16 bags  
 Pallet Index 24 cartons = 384 bags



COLOUR	ITEM NO.	BARCODE CARTON	BARCODE BAG
○ white	205-435000-10	4002653 719847	4002653 020905



*with green wick*

**PREMIUM LIGHTS** · bag of 50

in metal cups, burning time ± 8h  
 Dimensions Ø 38 mm  
 Ordering Unit 1 carton = 8 bags  
 Pallet Index 32 cartons = 256 bags



COLOUR	ITEM NO.	BARCODE CARTON	BARCODE BAG
○ white	205-476004-10	4002653 751328	4002653 051138





**PROFI**Line

**PREMIUM-LIGHTS  
IN TRANSPARENT CUPS** · pack of 24

in transparent cup, burning time ± 6h  
 Dimensions Ø 38 mm  
 Ordering Unit 1 carton = 6 packs  
 Pallet Index 105 cartons = 630 packs



COLOUR	ITEM NO.	BARCODE CARTON	BARCODE PACK
○ white	205-433004-10	4002653 784234	4002653 084594





**PROFI**Line

**TEA LIGHTS** · carton of 380

in metal cups  
 Dimensions Ø 38 mm  
 Ordering Unit 1 carton = 380 pieces  
 Pallet Index 60 cartons = 22800 pieces



COLOUR	ITEM NO.	BARCODE CARTON
○ white	205-419001-10	4002653 018995



**PROFI**Line

**PREMIUM LIGHTS** · carton of 320

in metal cups, burning time ± 6h  
 Dimensions Ø 38 mm  
 Ordering Unit 1 carton = 320 pieces  
 Pallet Index 60 cartons = 19200 pieces



COLOUR	ITEM NO.	BARCODE CARTON
○ white	205-439000-10	4002653 033219

*with green wick*



**PROFI**Line

**PREMIUM LIGHTS** · carton of 250

in metal cups, burning time ± 8h  
 Dimensions Ø 38 mm  
 Ordering Unit 1 carton = 250 pieces  
 Pallet Index 60 cartons = 15000 pieces



COLOUR	ITEM NO.	BARCODE CARTON
○ white	205-479000-10	4002653 051749

*with green wick*





# MASTER LIGHT

*The perfect light – with the blue wick*

Our Master Lights feature a beautiful large flame and burn for up to twelve hours. Hardly any wax remains even if the candles are lit two or three times. Lower consumption of wax means that the Master Lights make particularly good use of precious resources. They are also suitable for many different glasses and lanterns.



*with blue wick*

## MASTER LIGHTS · bag of 15

in metal cups, with blue wick  
Dimensions Ø 48 mm  
Ordering Unit 1 carton = 10 bags  
Pallet Index 36 cartons = 360 bags



COLOUR	ITEM NO.	BARCODE CARTON	BARCODE BAG
○ white	205-483000-10	4002653 778295	4002653 078081



*with blue wick*

## PROFI<sup>Line</sup>

## MASTER LIGHTS · carton of 140

in metal cups, with blue wick  
Dimensions Ø 48 mm  
Ordering Unit 1 carton = 140 pieces  
Pallet Index 60 cartons = 8400 pieces



COLOUR	ITEM NO.	BARCODE CARTON
○ white	205-488000-10	4002653 078098



**MAXI LIGHTS** · pack of 4

in metal cups  
Dimensions Ø 58 mm  
Ordering Unit 1 carton = 12 packs  
Pallet Index 114 cartons = 1368 packs



COLOUR	ITEM NO.	BARCODE CARTON	BARCODE PACK
○ white	205-451003-10	4002653 702320	4002653 052005



**MAXI LIGHTS** · bag of 10

in metal cups  
Dimensions Ø 58 mm  
Ordering Unit 1 carton = 10 bags  
Pallet Index 48 cartons = 480 bags



COLOUR	ITEM NO.	BARCODE CARTON	BARCODE BAG
○ white	205-452002-10	4002653 769057	4002653 069386



PROFI Line



**MAXI LIGHTS**  
**IN TRANSPARENT CUPS** · pack of 12

in transparent cups  
Dimensions Ø 58 mm  
Ordering Unit 1 carton = 6 packs  
Pallet Index 140 cartons = 840 packs



COLOUR	ITEM NO.	BARCODE CARTON	BARCODE PACK
○ white	205-452009-10*	4002653 784241	4002653 084600



PROFI Line



**MAXI LIGHTS** · pack of 20

in metal cups  
Dimensions Ø 58 mm  
Ordering Unit 1 carton = 5 packs  
Pallet Index 66 cartons = 330 packs



COLOUR	ITEM NO.	BARCODE CARTON	BARCODE PACK
○ white	205-453009-10	4002653 781073	4002653 083009



PROFI Line



**MAXI LIGHTS** · bag of 40

in metal cups  
Dimensions Ø 58 mm  
Ordering Unit 1 carton = 9 bags  
Pallet Index 16 cartons = 144 bags



COLOUR	ITEM NO.	BARCODE CARTON	BARCODE BAG
○ white	205-455000-10	4002653 779179	4002653 079149



## Glück

[glyk], das;  
unbeschreiblich schönes Gefühl,  
verbunden mit innerer Zufriedenheit  
und dem Wunsch, es möge nie aufhören.



### **NEW** THREE-WICK CANDLE IN CONCRETE BOWL *LUCK*

with an engraved sentence, white wax filling  
Dimensions 70 x 104 mm  
Ordering Unit 1 carton = 12 pieces  
Pallet Index 216 cartons = 432 pieces

COLOUR	ITEM NO.	BARCODE CARTON	BARCODE PIECE
● grey	205-652002-82	4002653 614470	4002653 093640



### PARTYGLASS

with white wax filling  
Dimensions 128 x 97 mm  
Ordering Unit 1 carton = 12 pieces  
Pallet Index 36 cartons = 432 pieces



COLOUR	ITEM NO.	BARCODE CARTON	BARCODE PIECE
○ white	205-612015-10	4002653 711995	4002653 012252



### OUTDOOR PARTY CANDLE

coloured transparent PVC cup with white wax filling  
Dimensions 110 x 110 mm  
Ordering Unit 1 carton = 6 pieces  
Pallet Index 77 cartons = 462 pieces

COLOUR	ITEM NO.	BARCODE CARTON	BARCODE PIECE
● berry	205-642056-43	4002653 790044	4002653 092735
● blue	205-642056-55	4002653 790051	4002653 092742
● light green	205-642056-60	4002653 790068	4002653 092759



### OUTDOOR GLASS LANTERN

with white wax filling, „Low Boy“  
Dimensions 105 x 95 mm  
Ordering Unit 1 carton = 12 pieces  
Pallet Index 42 cartons = 504 pieces

COLOUR	ITEM NO.	BARCODE CARTON	BARCODE PIECE
○ white	205-612012-10	4002653 731702	4002653 034957
● red	205-612012-33	4002653 719663	4002653 021513





**CAKE CANDLES** · 24 candles with 12 holders

on card, in a tray  
Ordering Unit 1 tray = 10 packs  
Pallet Index 240 trays = 2400 packs

COLOUR	ITEM NO.	BARCODE TRAY	BARCODE PACK
○ multi-coloured	205-814012-01	4002653 783299	4002653 083443



**DRIP CANDLES** · pack of 2

multi-coloured drips  
Dimensions 300 x 29 mm  
Ordering Unit 1 carton = 15 packs  
Pallet Index 70 cartons = 1050 packs

COLOUR	ITEM NO.	BARCODE CARTON	BARCODE PACK
● multi-coloured	205-715000-99	4002653 702504	4002653 119005

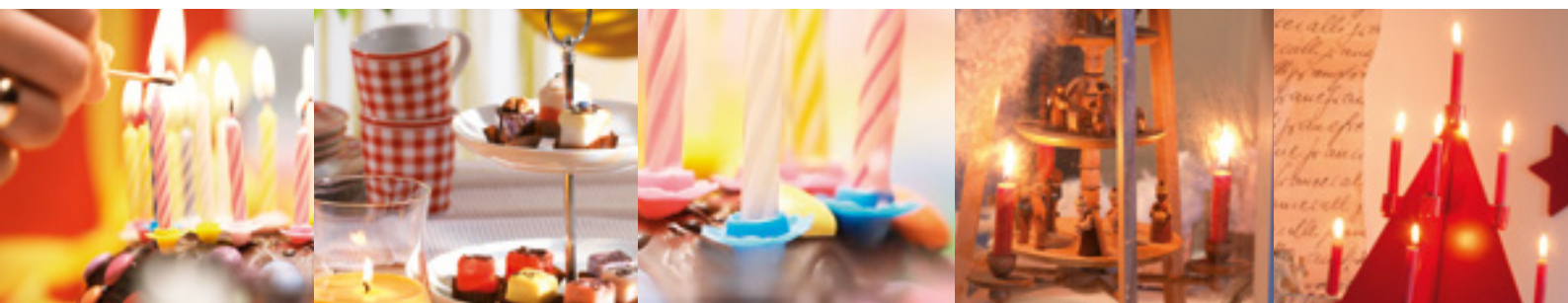


**CHRISTMAS TREE CANDLES** · pack of 20, self-extinguishing

dipped quality, solid coloured  
Dimensions 124 x 12 mm  
Ordering Unit 1 carton = 20 packs  
Pallet Index 70 cartons = 1400 packs



COLOUR	ITEM NO.	BARCODE CARTON	BARCODE PACK
○ white	205-307000-10	4002653 703730	4002653 048039
● champagne	205-307000-14	4002653 752578	4002653 054436
● red	205-307000-33	4002653 703723	4002653 048084





## *Fragrance variety for a great atmosphere*

Beautiful decorations for your home are very on trend and are only improved by comforting fragrances. Fragrances emphasise individuality and create a special atmosphere in every room.

The carefully selected fragrances from Dufti are known for their pleasant fragrance development, comply with the requirements of the RAL (German Institute for Quality Assurance

and Labelling) criteria for all raw and auxiliary materials used, and are designed in such a way that they still manage to achieve a great fragrance without labelling. In this way the risk of an allergic reaction is significantly reduced.

The colourful product range from Dufti provides the right scent for every occasion.





**SCENTED PILLAR CANDLE** · 110 x 58 mm

individually shrink-wrapped, in tray

Dimensions 110 x 58 mm  
 Ordering Unit 1 tray = 4 pieces  
 Pallet Index 399 trays = 1596 pieces



COLOUR/SCENT	ITEM NO.	BARCODE TRAY	BARCODE PIECE
● Soft Vanilla	213-235026-14	4002653 788133	4002653 090649
● Orange Mango	213-235026-25	4002653 788140	4002653 090656
● Red Fruits	213-235026-33	4002653 788157	4002653 090663
● Ginger Green Tea	213-235026-60	4002653 788171	4002653 090687
● Opium Sandalwood	213-235026-80	4002653 788164	4002653 090670



**SCENTED CANDLE IN GLASS** · clear



in tray  
Dimensions 86 x 70 mm  
Ordering Unit 1 tray = 4 pieces  
Pallet Index 290 trays = 1160 pieces

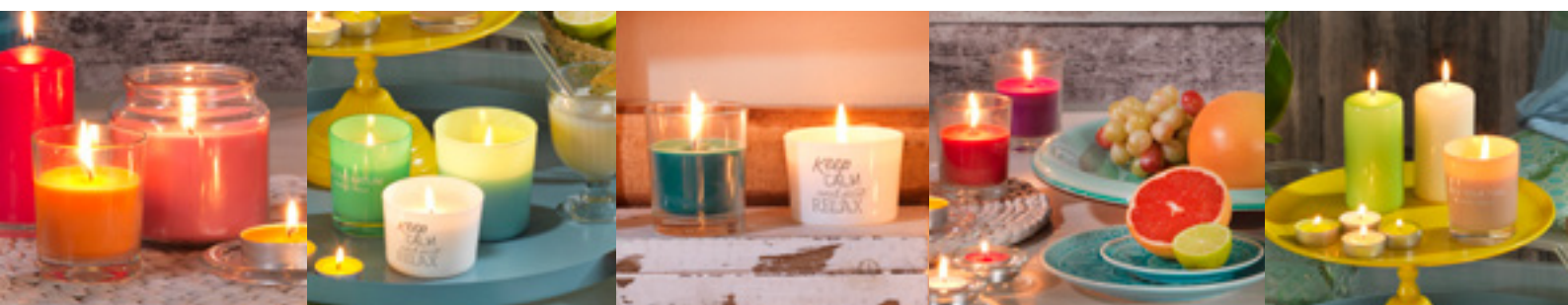
COLOUR/SCENT	ITEM NO.	BARCODE TRAY	BARCODE PIECE
● Soft Vanilla	213-611192-14	4002653 788317	4002653 090816
● Orange Mango	213-611192-25	4002653 788324	4002653 090823
● Rose Tea	213-611192-30	4002653 788331	4002653 090830
● Red Fruits	213-611192-33	4002653 788355	4002653 090854
● Berry Dream	213-611192-35	4002653 788362	4002653 090861
● Calming Lavender	213-611192-43	4002653 788348	4002653 090847
● Pure Freshness	213-611192-50	4002653 788386	4002653 090885
● Blue Lagoon	213-611192-53	4002653 788393	4002653 090892
● Ginger Green Tea	213-611192-60	4002653 788379	4002653 090878
● Opium Sandalwood	213-611192-80	4002653 788409	4002653 090908



**SCENTED CANDLE IN GLASS CANDY** · clear

with glass lid, in carton  
Dimensions 110 x 100 mm  
Ordering Unit 1 carton = 3 pieces  
Pallet Index 168 cartons = 504 pieces

COLOUR/SCENT	ITEM NO.	BARCODE CARTON	BARCODE PIECE
● Mango Pineapple	213-611193-17*	4002653 788836	4002653 091356
● Silk Blossoms	213-611193-30	4002653 788843	4002653 091363
● Lemon Lime	213-611193-60	4002653 788867	4002653 091387







**SCENTED CANDLE IN GLASS FLORAL** · clear

with cork lid/plate, in tray

Dimensions 90 x 86 mm  
 Ordering Unit 1 tray = 2 pieces  
 Pallet Index 270 trays = 540 pieces



COLOUR/SCENT	ITEM NO.	BARCODE TRAY	BARCODE PIECE
● Rose & Peony	213-611194-30	4002653 788881	4002653 091301
● Herbs & Lime	213-611194-60	4002653 788898	4002653 091394



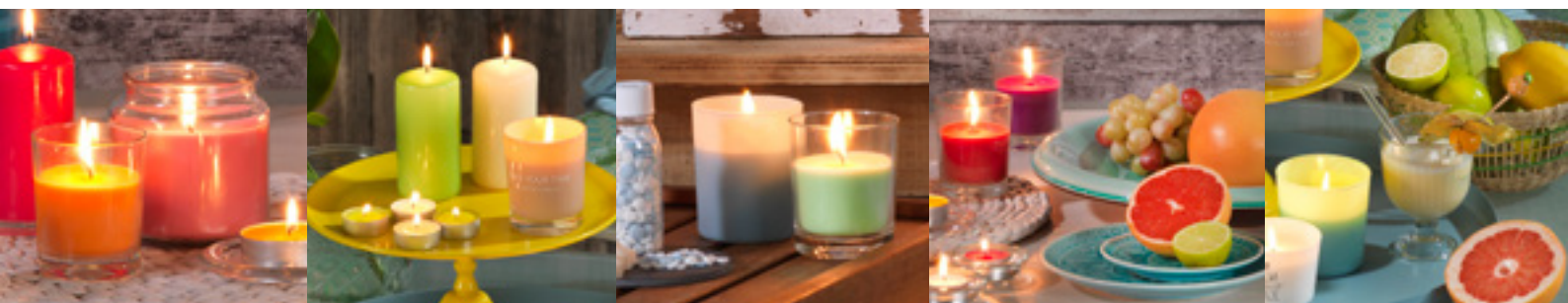
**SCENTED CANDLE IN GLASS** · with designed sleeves

with metal lid, with flower fragrance, in tray

Dimensions 76 x 70 mm  
 Ordering Unit 1 tray = 4 pieces  
 Pallet Index 280 trays = 1120 pieces



COLOUR/SCENT	ITEM NO.	BARCODE TRAY	BARCODE PIECE
● Design Poppy	213-611195-97	4002653 788188	4002653 091417
● Design Magnolia	213-611195-99	4002653 788201	4002653 091431





**NEW** SCENTED CANDLE IN GLASS AQUARELLE · white wax filling



white outside, coloured inside, white wax filling  
 Dimensions 86 x 70 mm  
 Ordering Unit 1 tray = 3 pieces  
 Pallet Index 420 trays = 1260 pieces



COLOUR/SCENT	ITEM NO.	BARCODE TRAY	BARCODE PIECE
● apricot / Peach Blossom	213-611227-20	4002653 754725	4002653 057086
● lilac / Purple Power	213-611227-46	4002653 754732	4002653 057093



**NEW** SCENTED CANDLE IN GLASS *SKANDIC* · white wax filling

Painted inside, white wax filling  
 Dimensions 86 x 70 mm  
 Ordering Unit 1 tray = 3 pieces  
 Pallet Index 420 trays = 1260 pieces



COLOUR/DUFT	ITEM NO.	BARCODE TRAY	BARCODE PIECE
● apricot / Take your Time	213-611228-20	4002653 754749	4002653 057109
● light blue / Love is in the Air	213-611228-54	4002653 754763	4002653 057123
● mint / Feel the Nature	213-611228-50	4002653 754756	4002653 057116



**NEW** SCENTED CANDLE IN GLASS *OMBRE* · white wax filling

two tone, coloured frosted, white wax filling  
 Dimensions 90 x 85 mm  
 Ordering Unit 1 tray = 2 pieces  
 Pallet Index 270 cartons = 540 pieces



COLOUR/SCENT	ITEM NO.	BARCODE CARTON	BARCODE PIECE
● pink / Red Berries Peony	213-611229-32	4002653 754770	4002653 057130
● mint / Sea Salt Coconut Bliss	213-611229-55	4002653 754794	4002653 057154
● light grey / Golden Amber Tonka Bean	213-611229-82	4002653 754787	4002653 057147







**SCENTED LIGHTS** · flatpack of 18

in metal cups, in tray

Dimensions                    ø 38 mm  
Ordering Unit                1 tray = 6 flatpacks  
Pallet Index                   210 trays = 1260 flatpacks



COLOUR/SCENT	ITEM NO.	BARCODE TRAY	BARCODE FLATPACK
● Soft Vanilla	213-423090-14	4002653 788218	4002653 090717
● Orange Mango	213-423090-25	4002653 788225	4002653 090724
● Rose Tea	213-423090-30	4002653 788232	4002653 090731
● Red Fruits	213-423090-33	4002653 788256	4002653 090755
● Berry Dream	213-423090-35	4002653 788263	4002653 090762
● Calming Lavender	213-423090-43	4002653 788249	4002653 090748
● Pure Freshness	213-423090-50	4002653 788287	4002653 090786
● Ginger Green Tea	213-423090-60	4002653 788270	4002653 090779
● Opium Sandalwood	213-423090-80	4002653 788300	4002653 090809



**SCENTED LIGHTS** · bag of 30

in metal cups, in tray

Dimensions                    ø 38 mm  
Ordering Unit                1 tray = 12 bags  
Pallet Index                   48 trays = 576 bags



COLOUR/SCENT	ITEM NO.	BARCODE TRAY	BARCODE BAG
● Soft Vanilla	213-424016-14	4002653 788614	4002653 091226
● Zesty Orange	213-424016-25	4002653 788621	4002653 091233
● Flower Petals	213-424016-30	4002653 788676	4002653 091288
● Raspberry Vanilla	213-424016-34	4002653 788638	4002653 091240
● Calming Lavender	213-424016-40	4002653 788652	4002653 091264
● Lemongrass	213-424016-62	4002653 788645	4002653 091257
● Opium Sandalwood	213-424016-80	4002653 788669	4002653 091271





**SCENTED LIGHTS** · flatpack of 30

in metal cups, in tray

Dimensions            ø 38 mm  
Ordering Unit         1 tray = 6 flatpacks  
Pallet Index           128 trays = 768 flatpacks



COLOUR/SCENT	ITEM NO.	BARCODE TRAY	BARCODE FLATPACK
● Soft Vanilla	213-424017-14	4002653 788751	4002653 091158
● Orange Mango	213-424017-25	4002653 788768	4002653 091165
● Pomegranate	213-424017-33	4002653 753667	4002653 055785
● Dark Cherry	213-424017-36	4002653 788775	4002653 091172
● Plum Chassis	213-424017-46	4002653 753674	4002653 055792
● Ginger Green Tea	213-424017-60	4002653 788782	4002653 091189



**SCENTED MAXI LIGHTS** · flatpack of 9

in metal cups, in tray

Dimensions            ø 58 mm  
Ordering Unit         1 tray = 8 flatpacks  
Pallet Index           140 trays = 1120 flatpacks



COLOUR/SCENT	ITEM NO.	BARCODE TRAY	BARCODE FLATPACK
● Soft Vanilla	213-462016-14	4002653 788799	4002653 091318
● Orange Mango	213-462016-25	4002653 788805	4002653 091325
● Dark Cherry	213-462016-36	4002653 788812	4002653 091332
● Ginger Green Tea	213-462016-60	4002653 788829	4002653 091349



**SCENTED VOTIVE CANDLE** · in tray

individual, in tray  
 Dimensions 55 x 38 mm  
 Ordering Unit 1 tray = 8 pieces  
 Pallet Index 1035 trays = 8280 pieces



COLOUR/SCENT	ITEM NO.	BARCODE TRAY	BARCODE PIECE
● Soft Vanilla	213-292003-14	4002653 788515	4002653 091011
● Orange Mango	213-292003-25	4002653 788522	4002653 091028
● Red Fruits	213-292003-33	4002653 788539	4002653 091035
● Ginger Green Tea	213-292003-60	4002653 788553	4002653 091059
● Opium Sandalwood	213-292003-80	4002653 788546	4002653 091042



**ROOM FRAGRANCE** · 100 ml

water-based, in tray  
 Dimensions 205 x 48 x 68 mm  
 Ordering Unit 1 tray = 4 packs  
 Pallet Index 220 trays = 880 packs

COLOUR/SCENT	ITEM NO.	BARCODE TRAY	BARCODE PACK
● Soft Vanilla	213-006038-14	4002653 788713	4002653 091110
● Sweet Lilac	213-006038-47	4002653 788720	4002653 091127
● Ginger Green Tea	213-006038-60	4002653 788744	4002653 091141
● Opium Sandalwood	213-006038-80	4002653 788737	4002653 091134





**SCENTED OIL** · 10 ml

with safety lid, in tray

Dimensions

70 x 25 mm

Ordering Unit

1 carton = 16 trays (1 tray = 6 pieces)

Pallet Index

115 cartons = 11040 pieces

COLOUR/SCENT	ITEM NO.	BARCODE CARTON	BARCODE PIECE
● Flower Meadow	213-001048-10	4002653 930648	4002653 090946
● Soft Vanilla	213-001048-14	4002653 930617	4002653 090915
● Zesty Lemon	213-001048-17	4002653 930624	4002653 090922
● Exotic Melon	213-001048-20	4002653 930693	4002653 090991
● Mango Papaya	213-001048-25	4002653 930631	4002653 090939
● Mandarin Orange	213-001048-26	4002653 930709	4002653 091004
● Sweet Raspberry	213-001048-34	4002653 930679	4002653 090977
● Dark Cherry	213-001048-36	4002653 930686	4002653 090984
● Calming Lavender	213-001048-43	4002653 930655	4002653 090953
● Soothing Harmony	213-001048-45	4002653 789642	4002653 092193
● Sweet Lilac	213-001048-47	4002653 930662	4002653 090960
● Fresh Bergamot	213-001048-63	4002653 789659	4002653 092209



**SCENTED MELTIES** · 100% Stearin

pack of 8, in tray

Dimensions

89 x 41 mm

Ordering Unit

1 carton = 20 trays (1 tray = 4 packs)

Pallet Index

36 cartons = 2880 packs

COLOUR/SCENT	ITEM NO.	BARCODE CARTON	BARCODE PACK
● Soft Vanilla	213-003010-14*	4002653 930716	4002653 091066
● Orange Mango	213-003010-25*	4002653 930747	4002653 091097
● Red Fruits	213-003010-33*	4002653 930723	4002653 091073
● Ginger Green Tea	213-003010-60*	4002653 930754	4002653 091103
● Opium Sandalwood	213-003010-80*	4002653 930730	4002653 091080

# ANTI TOBACCO

*helps against nicotine odour*

Bad odours are annoying and it is understandable that we want to get rid of them. Nicotine is one of those unpleasant smells that our noses are particularly sensitive to.

But that is all in the past:

Dufti by GIES now offers two attractive products with dual action against annoying nicotine smells.

Special molecules – so-called neutrarome – can change the bad odours to neutralise them. A specially designed scent additionally ensures that a particularly pleasant fragrance is emitted instead of the nicotine smell.



## SCENTED LIGHTS · flatpack of 18

in metal cups, in tray

Dimensions                    ø 38 mm  
Ordering Unit                 1 tray = 6 flatpacks  
Pallet Index                   210 trays = 1260 flatpacks

COLOUR/SCENT	ITEM NO.	BARCODE TRAY	BARCODE FLATPACK
○ Anti Tobacco	213-423091-10	40025653 786900	40025653 090694



## SCENTED CANDLE IN GLASS · frosted

in tray

Dimensions                    85 x 72 mm  
Ordering Unit                 1 tray = 3 pieces  
Pallet Index                   420 trays = 1260 pieces

COLOUR/SCENT	ITEM NO.	BARCODE TRAY	BARCODE PIECE
○ Anti Tobacco	213-611198-10	40025653 788973	4002653 090700







**SCENTED CANDLE IN GLASS** *WELLNESS* · frosted

with cork lid, in tray

Dimensions 86 x 70 mm  
Ordering Unit 1 tray = 3 pieces  
Pallet Index 369 trays = 1107 pieces



COLOUR/SCENT	ITEM NO.	BARCODE TRAY	BARCODE PIECE
● Wellness FEELINGS	213-611197-30	4002653 788928	4002653 091486
● Wellness BALANCE	213-611197-50	4002653 788935	4002653 091493
● Wellness SPIRIT	213-611197-60	4002653 788911	4002653 091479



**SCENTED BEADS** *WELLNESS* · two tone

with safety lid, in tray

Dimensions 107 x 39 mm  
Ordering Unit 1 carton = 8 trays (1 tray = 4 pieces)  
Pallet Index 84 cartons = 2688 pieces

COLOUR/SCENT	ITEM NO.	BARCODE CARTON	BARCODE PIECE
● Wellness FEELINGS	213-003011-30	4002653 930778	4002653 091516
● Wellness BALANCE	213-003011-50	4002653 930785	4002653 091523
● Wellness SPIRIT	213-003011-60	4002653 930761	4002653 091509





**NEW** 2-IN-1 CANDLE HOLDER *KASSANDRA*

for tea lights and taper candles

Dimensions 60 x 60 mm  
Ordering Unit 1 carton = 8 pieces  
Pallet Index 264 cartons = 2112 pieces

COLOUR	ITEM NO.	BARCODE CARTON	BARCODE PIECE
○ white	205-944005-10	4002653 790884	4002653 093664
● anthracite	205-944005-82	4002653 790877	4002653 093671



**NEW** HOLDER FOR MAXI AND TEA LIGHTS *ELARA* · 4 pieces

with groove

Dimensions 80 x 70 mm  
Ordering Unit 1 carton = 4 pieces  
Pallet Index 400 cartons = 1600 pieces

COLOUR	ITEM NO.	BARCODE CARTON	BARCODE PIECE
○ clear	205-951024-00	4002653 790921	4002653 093626



**NEW** **GLASS MAXI LIGHT HOLDER HELENA** · tray of 4

round, clear glass  
 Dimensions 80 x 50 mm  
 Ordering Unit 1 carton = 8 pieces (2 trays á 4 pieces)  
 Pallet Index 336 trays = 1344 pieces

COLOUR	ITEM NO.	BARCODE CARTON	BARCODE PIECE
○ clear	213-941106-00	4002653 754305	4002653 093176



**GLASS TEA LIGHT HOLDER FILIPPA** · tray of 6

square, clear glass  
 Dimensions 51 x 51 x 33 mm  
 Ordering Unit 1 tray = 6 pieces  
 Pallet Index 1040 trays = 6240 pieces

COLOUR	ITEM NO.	BARCODE TRAY	BARCODE PIECE
○ clear	213-941105-00	4002653 614098	4002653 092988



**GLASS TEA LIGHT HOLDER ELENA** · tube of 4

Dimensions 30 x 50 mm  
 Ordering Unit 1 carton = 6 tubes  
 Pallet Index 215 cartons = 1290 pieces

COLOUR	ITEM NO.	BARCODE CARTON	BARCODE TUBE
○ clear	205-941101-00	4002653 779315	4002653 079309



**MULTIFUNCTIONAL HOLDER DESPINA**  
**FOR MASTER-LIGHTS UND TAPER CANDLES**

clear glass  
 Dimensions 63 x 69 mm  
 Ordering Unit 1 carton = 6 pieces  
 Pallet Index 231 cartons = 1386 pieces

COLOUR	ITEM NO.	BARCODE CARTON	BARCODE PIECE
○ clear	205-941100-00*	4002653 778967	4002653 078845



### VOTIVE CANDLE HOLDER *BECHER*

clear glass, individually

Dimensions 47 x 65 x 65 mm  
Ordering Unit 1 carton = 12 pieces (2 trays à 6 pieces)  
Pallet Index 240 cartons = 2880 pieces

COLOUR	ITEM NO.	BARCODE CARTON	BARCODE PIECE
○ clear	215-951013-00	4003528 893815	4001396 235034



### GLASS PLATE *VALENTINA* FOR BALL AND PILLAR CANDLES

clear glass, in a tray

Dimensions Ø 110 mm  
Ordering Unit 1 tray = 6 pieces  
Pallet Index 231 trays = 1386 pieces

COLOUR	ITEM NO.	BARCODE TRAY	BARCODE PIECE
○ clear	205-911001-00	4002653 719694	4002653 021544



### CERAMIC FRAGRANCE BURNER

Dimensions 124 x 74 x 72 mm  
Ordering Unit 1 carton = 4 pieces  
Pallet Index 168 cartons = 672 pieces

COLOUR	ITEM NO.	BARCODE CARTON	BARCODE PIECE
○ white	215-974009-10	4002653 774716	4002653 074786



## Colour and size guide „pillar-, ball-, dinner- and tapered candles“

	○ -10 white	● -14 cham- pagne	● -17 yellow	● -25 orange	● -32 antique pink	● -33 red	● -35 ruby	● -43 fuchsia	● -60 lime	● -63 sage	● -80 taupe
<b>PILLAR CANDLE</b> 80 x 48 mm	●	●			●	●				●	●
<b>PILLAR CANDLE</b> 100 x 58 mm	●	●				●					
<b>PILLAR CANDLE</b> 120 x 78 mm	●	●			●	●				●	●
<b>PILLAR CANDLE</b> 130 x 58 mm	●	●			●	●				●	●
<b>PILLAR CANDLE</b> 150 x 68 mm	●	●									
<b>PILLAR CANDLE</b> 160 x 58 mm	●	●									
<b>PILLAR CANDLE</b> 180 x 78 mm	●	●				●					
<b>PILLAR CANDLE</b> 200 x 68 mm	●	●									
<b>PILLAR CANDLE</b> 250 x 78 mm	●	●									
<b>PILLAR CANDLE</b> 300 x 88 mm		●									
<b>PROFI<sup>Line</sup> PILLAR CANDLE</b> 90 x 40 mm		●									
<b>PROFI<sup>Line</sup> PILLAR CANDLE</b> 100 x 48 mm		●									
<b>PROFI<sup>Line</sup> PILLAR CANDLE</b> 130 x 58 mm	●	●									
<b>PROFI<sup>Line</sup> PILLAR CANDLE</b> 200 x 68 mm		●									
<b>DINNER CANDLES</b> pack of 10, 180 x 21,5 mm	●	●	●			●	●	●	●		
<b>TAPER CANDLES</b> pack of 10, 245 x 23,5 mm	●	●	●	●	●	●	●	●	●	●	●

The following terms apply to all our offers, sales, deliveries and services and become contractual content unless otherwise stipulated in writing. This also applies if these terms are not separately referred to in individual cases. The following terms also apply to all future business relations, even when not expressly agreed upon again.

Other terms only apply if these have been expressly approved by us in writing. Without approval they do not oblige use, even if we do not expressly revoke such terms.

At the latest, the buyer acknowledges the terms of sale and delivery with the order confirmation, the acceptance of the merchandise (complete or partial delivery) or the payment of the invoice.

## I. Conclusion of Contract

- Our offers are subeacht to confirmation. The order of the buyer in principle represents a binding offer. For our contractual binding, written confirmation is always required, or delivery of the goods on our part. Any amendments or supplements to the agreement, especially via our field force, are only valid after written approval has been received from us.
- Drawings, illustrations, measures, weights and other performance data are only binding if these have been expressly agreed in writing.
- Prices and terms specified in the offers are binding for us for a maximum of 30 days. Performances exceeding this period will be invoiced separately.
- If delivery is executed after more than 4 months after conclusion of the sale contract, any price increases which may have arisen during such time will be paid for by the buyer. We can withdraw from the contract without additional period of time, if the buyer does not accept the new price or the buyer asserts claims for fulfillment of performance or damages. In the case of deadline orders, the terms at the time of delivery apply.
- Unless otherwise agreed, our prices are ex-works and without packaging. All prices are in Euros plus VAT.

## II. Delivery

- Delivery periods are specified by us as accurately as possible, without obligation. Delivery times agreed apply ex-works and will be observed where possible. Appropriate part deliveries are permissible.
- Delivery periods are extended if caused by events over which we have no responsibility, including strike and lock-out, power and water failure, no delivery from our suppliers, fire, war, natural events and transport difficulties, in so far as such events are verified to have considerable influence on the completion and delivery of the subeacht of delivery. The same applies if such events occur during the period of existing delay.
- If we are in delay with delivery for reasons for which we are culpable, the buyer must grant an additional delivery period of 4 weeks. In the case of goods ready for dispatch, the additional delivery period is 7 days. The additional delivery period can only be specified after expiry of the regular delivery period, and is calculated as of the day we receive written information from the buyer.
- The buyer is entitled to withdraw from the contract, should we be unable to deliver within the grace period.
- Delivery is made ex-works/warehouse, in all cases at the risk of the buyer. On request from the buyer, we will insure the goods at his cost against transport risks. We determine the manner of transport and route of transport.
- A minimum order value of €400,- applies for deliveries within Germany.
- Delivery is carriage paid and exempt from charges.
- Packaging material and equipment returned to us will not be reimbursed.

## III. Terms of payment

- All invoices are to be paid within 10 days of the date of invoice with 2 % discount, or within 30 days, net.
- Bills of exchange are only accepted on special agreement. All costs for such are borne by the buyer.
- In the event of payment later than 30 days after date of invoice or after stipulated due date, default interest amounting to 9% points above the base interest rate as well as a default flat charge amounting to Euro 40.00 are charged.  
We are in no way obligated to any further delivery resulting from any current contract before the invoice amounts due, including default interest, have been paid. If the buyer is in default of a payment due or if his/her financial situation worsens significantly, we can request cash payment prior to the delivery of the merchandise for all still outstanding deliveries with the term of payment becoming inapplicable.  
On the same premise, we can immediately call in all outstanding payments – including bills of exchange. In addition, we are entitled, at our discretion and on exclusion of § 323 BGB (German Civil Code), to withdraw from this contract and other current contracts with the buyer, to claim damages due to non-fulfilment of contract, or to demand the return of the delivered goods without exercising the right to withdraw.
- The buyer is not entitled to a right to retention with regards to due payment obligations, or to offset these with counter claims, unless these counter claims are undisputed by us or have been successfully asserted at law. Offset against another payment is possible as long as this is synallagmatically linked with the main payment which is offset.
- Bills of exchange and cheques are only accepted on account of performance.

## IV. Retention of title

- All goods delivered remain our property, even when paid but still at the buyer's, until full payment has been received of all, and future, claims from the business relationship including all ancillary claims – irrespective of their legal basis – and until payment of bills of exchange and cheques.
- The buyer is entitled to process and sell goods with our retention of title within the normal scope of his business. The buyer is not entitled to pledge or assign by way of security the goods under retention of title, or products made with said goods.
- By processing the goods the buyer does not acquire ownership pursuant to § 950 BGB. Processing by the buyer is made for us. If the goods under our retention of title are processed together with other goods under right of retention, we acquire co-ownership of the new product proportionately to the invoice value of our goods under retention of title to the other processed goods.
- The buyer assigns his claims to us concerning re-sale of the goods under right of retention proportionately, irrespective of whether the goods under retention of title are sold with or without processing, or to one or more buyers.
- The buyer ensures that a global assignment to another party does not exist at the time of conclusion of this contract. Until revocation, we authorize the buyer to collect claims from resale. The buyer's collection authority readily expires if the buyer suspends payment, if judgment is enforced against the buyer by execution, if the buyer is requested to provide information regarding his/her financial situation by a court of law, to disclose his/her financial circumstances or if judicial or extrajudicial settlement or insolvency proceedings are filed regarding the buyer's assets.  
Our authorization to collect remains unaffected by the authorization of collection of the buyer. We will not collect claims, provided the buyer observes his payment duties. At our request, the buyer must immediately inform us of the debtors of claims assigned, and to give notice of the assignment to the debtors.
- Restrictions to our property and attachments of said property, which the buyer must immediately obeacht to, must be informed to us immediately by registered mail. On our request, the buyer undertakes to provide us with immediate information or accounts concerning existing stocks of goods, on processing or combining of goods under retention of title with other goods, and on claims arising from re-sale.

- If the buyer does not fulfil an obligation to us, or if circumstances arise which make our rights appear to be endangered, we can immediately take back the goods under retention of title, without having previously declared our withdrawal from this sale contract or having set a period of grace for fulfillment of the respective obligation. In the case that we take back reserved goods while releasing the buyer from his obligations to accept the goods and pay the purchase price, we shall nevertheless be entitled to at least 25% of the invoice value for the reserved goods on the basis of non-fulfilment. Providing evidence of higher damages remains unaffected.
- Retention of titles is in this case subeacht to a condition subsequent, that on payment of all claims from business relations with the buyer, the goods we have a retention of title to pass on to the buyer, and also the claims assigned to him. If the value of securities due to us exceeds our claims by a total of more than 20%, we are obliged to release the securities on request from the buyer, provided their value exceeds the claims to be secured by more than 20%.

## V. Guarantee

- We guarantee the faultless condition of our goods - with the exclusion of all further claims, e.g. claims for compensation of direct or indirect damages - in that we shall redeliver faultless goods in accordance with our conditions within a reasonable period of time. In the event of unsuccessful redelivery, the buyer shall be entitled to demand a reduction in the purchase price or choose to rescind the contract.
- Products we produce are normally produced, without warranty, in accordance with the quality and labelling regulations of RAL 040 A. Length dimensions include the tip. Deviations in quality due to normal business standards and technical unavoidability, as well as the appearance of the goods, do not entitle the filing of a complaint.
- The buyer is obliged to inspect the goods delivered by us immediately after delivery. If a defect is found, the buyer is obliged to assert such defects in writing to us immediately, at the latest within a period of 7 days after receiving the goods, and, in the case of hidden defects, at least 7 days after detection of such defects.
- We do not accept liability for barcodes (Barcode-No.) attached to our products with regard to their electronic legibility.
- Dimensional tolerances are possible for technical production reasons.
- Guarantee claims of the buyer become statute-barred after 12 months after transfer.

## VI. Withdrawal, Liability

- In the event of non-fulfilment of our payment terms, or we come in possession of information casting doubt on the state of the buyer's finances, or if there is a significant deterioration in the financial circumstances of the buyer, we shall reserve the right to rescind the purchasecontract subeacht to reservation of claims for damages.
- Liability on our part – irrespective of the legal reason – is excluded pursuant to respective laws. This also applies for any liability concerning legal regulations on data pretection.

## VII. Place of jurisdiction and applicable law

The place of performance for all mutual responsibilities resulting from the delivery transaction is Glinde and sole place of jurisdiction for all disputes is exclusively Lübeck. However, we are also entitled to file claims against the buyer at his/her place of general jurisdiction. Solely the laws of the Federal Republic of Germany apply to the contractual relationship between the buyer and us, even if the buyer's place of residence or business is located abroad. The application of uniform law on the international sale of goods as well as laws on the conclusion of international sales agreements for goods is excluded.

## VIII. Severability clause, data privacy, written form requirement

- The legal validity of the remaining contract is still valid, even if individual provisions of these terms are legally ineffective.
- The buyer agrees that we process, in particularly store or transfer data pertaining to the buyer to a credit rating company, which we obtain in connection with the business relationship, taking the Federal Data Pretection Act into account, insofar as this takes place in line with the purpose of the contract or is required to maintain our legitimate interests and there is no reason to assume, that the buyer's legitimate interest prevail the exclusion of the processing, in particular transmission of this data.
- Amendments or additions to this contract must be in writing. If they do not comply with this contract, they are deemed void. This also applies to changing the clause on written form.

## Export Conditions

Delivery:

Ex works, fob german seaport or fob german airport from an order value of Euro 2.500,- (over-seas Euro 5.000,-). For deliveries in countries which don't belong to the pool of Euro pallets the pallets must be invoiced.

Terms of payment:

For initial orders payment in advance through banker's check, irrevocable letter of credit or cash against documents.

Prices:

All prices indicated in this pricelist are quoted net. For any discounts please refer to the Export department.

## Conditions d'exportation

Livraison:

Ex usine, franco à bord du navire ou de l'avion d'une valeur d'ordre de Euro 2.500,- (outr-mer Euro 5.000,-). Aux livraisons dans des pays qui ne sont pas du nombre du Pool pour Europalettes il nous faut facturer les palettes.

Mode de paiement:

Pour le premier ordre il faut le paiement en avance par cheque bancaire, accreditif irrevocable ou contre documents.

Prix:

Tous les prix indiqués dans cette liste s'entendent net. En ce qui concerne des rabats veuillez contacter le service des exportations.

High quality,  
DEKRA certified:



## The RAL seal of approval

Nearly all GIES products carry the RAL seal of approval, which means they have been tested by an independent institute (DEKRA) and meet the highest quality standards regarding raw materials, environmental safety and burning performance.

**GIES Kerzen GmbH**

Beim Zeugamt 8  
21509 Glinde / Germany  
Phone: +49 (0) 40 / 710 007 -0  
Fax: +49 (0) 40 / 710 007 -36  
[www.gies-kerzen.de](http://www.gies-kerzen.de)

Contact Sales Germany:  
[vertrieb@gies-kerzen.de](mailto:vertrieb@gies-kerzen.de)

Contact Export Department:  
[export@gies-kerzen.de](mailto:export@gies-kerzen.de)

**ASP-HOLMBLAD A/S**

Slotsmarken 10, st.tv.  
2970 Hørsholm / Denmark  
Telefon: +45 43 / 22 96 96  
Telefax: +45 43 / 22 96 97  
[www.asp-holmblad.dk](http://www.asp-holmblad.dk)

**Lileachholmens Stearinfabriks AB**

Gröndalsgatan 31-33, Box 905  
57229 Oskarshamn / Sweden  
Phone: +46 491 / 878 00  
Fax: +46 491 / 124 95  
[www.lileachholmens.se](http://www.lileachholmens.se)